



*Paradise*  
Dock & Lift Inc.

**ROLL-IN  
DOCK**

4311A 25 Ave  
Vernon, BC, Canada

1-888-411-3625

[www.paradisedocklift.com](http://www.paradisedocklift.com)



## PARADISE ROLL-IN DOCK

### Why Roll-In Dock?

- ▶ Easy Seasonal Removal
- ▶ Longer Sections
- ▶ Deeper Water Capable
- ▶ Sundeck Options

## WOOD GRAIN DECKING



## DOUBLE DRILLED DOCK



## Standard Roll-In Dock Sizes

- ▶ 4x8 ▶ 4x12 ▶ 4x16 ▶ 6x12 ▶ 8x8
- ▶ 8x12 ▶ 8x16 ▶ 4x12 Shore-End Ramp
- ▶ 4x16 Truss Ramp ▶ Custom Sizes Available

Wheel Kit	Adjustability	Water Depth w/ Wheel
Shallow	18"	11-29"
Medium	28"	17-45"
Deep	28"	33-61"
Extra Deep	42"	49-91"
Super Deep	48"	69-117"

Calculation based on top of dock 18" out of the water.  
Sandpads available upon request.

## GREY ROLL-IN SYSTEM







## THE PARADISE DOCK ADVANTAGE

The **PARADISE DOCK ADVANTAGE** is based on the quality and attention to detail we incorporate in our products for the benefit of our customers. We are a family-owned business based out of Vernon, British Columbia, Canada manufacturing for customers worldwide. Our docks perform second to none with industry-leading build strength and a wide array of accessories to create the dream waterfront experience.

### GORGEOUS SHOREFRONT APPEAL

- ▶ Streamline extruded aluminum frame.
- ▶ Multiple decking finishes.
- ▶ Decking is screwed down for ease of replacement.
- ▶ Our decking allows water and air to pass through, resulting in a safer and cooler surface.

### MODULAR DESIGN

- ▶ The modular design allows you to easily rearrange and reconfigure your dock.
- ▶ Effortlessly expand your dock; adding more sections as your needs change.
- ▶ Available with or without decking.

### INNOVATIVE FEATURES

- ▶ Our state-of-the-art screw jack leg system allows you to accurately level your dock while staying dry.
- ▶ Double braced legs provide superior stability and durability.
- ▶ Our unique track system allows you to easily move your accessories.
- ▶ Quick release ramp hinge for seasonal removal.
- ▶ Dock sections clip together in 2 positions (transport and locked).

### QUALITY COMPONENTS

- ▶ 6061 T6 marine grade aluminum construction.
- ▶ Custom stainless steel and aluminum fasteners.
- ▶ Manufactured in Canada.

## EASY INSTALLATION & REMOVAL

### SCREW JACK LEVELLING



### QUICK RELEASE HINGE



### DOCK CONNECTOR



## PARADISE SECTIONAL DOCK



Sectional docks are the perfect cost effective system for your waterfront property, they come standard with our extended accessory track which allows for infinite adjustment of your dock accessories.

### Why Sectional Dock?

- ▶ Sturdy, Durable Design
- ▶ Economical
- ▶ Stackable for Easy Storage



### Standard Sectional Dock Sizes

▶ 4x8 ▶ 4x10 ▶ 4x12

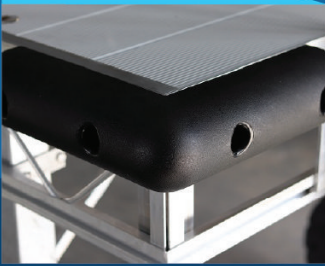
Wheel Kit	Adjustability	Water Depth w/ Wheel
Shallow	18"	11-29"
Medium	28"	17-45"
Deep	28"	33-61"
Extra Deep	42"	49-91"

Calculation based on top of dock 18" out of the water.  
Sandpads available upon request.



# DOCK ACCESSORIES

CORNER BUMPER



DOCK LADDER



CLEAT



VERTICAL BUMPER



DOCK FURNITURE



FISHING ROD HOLDER



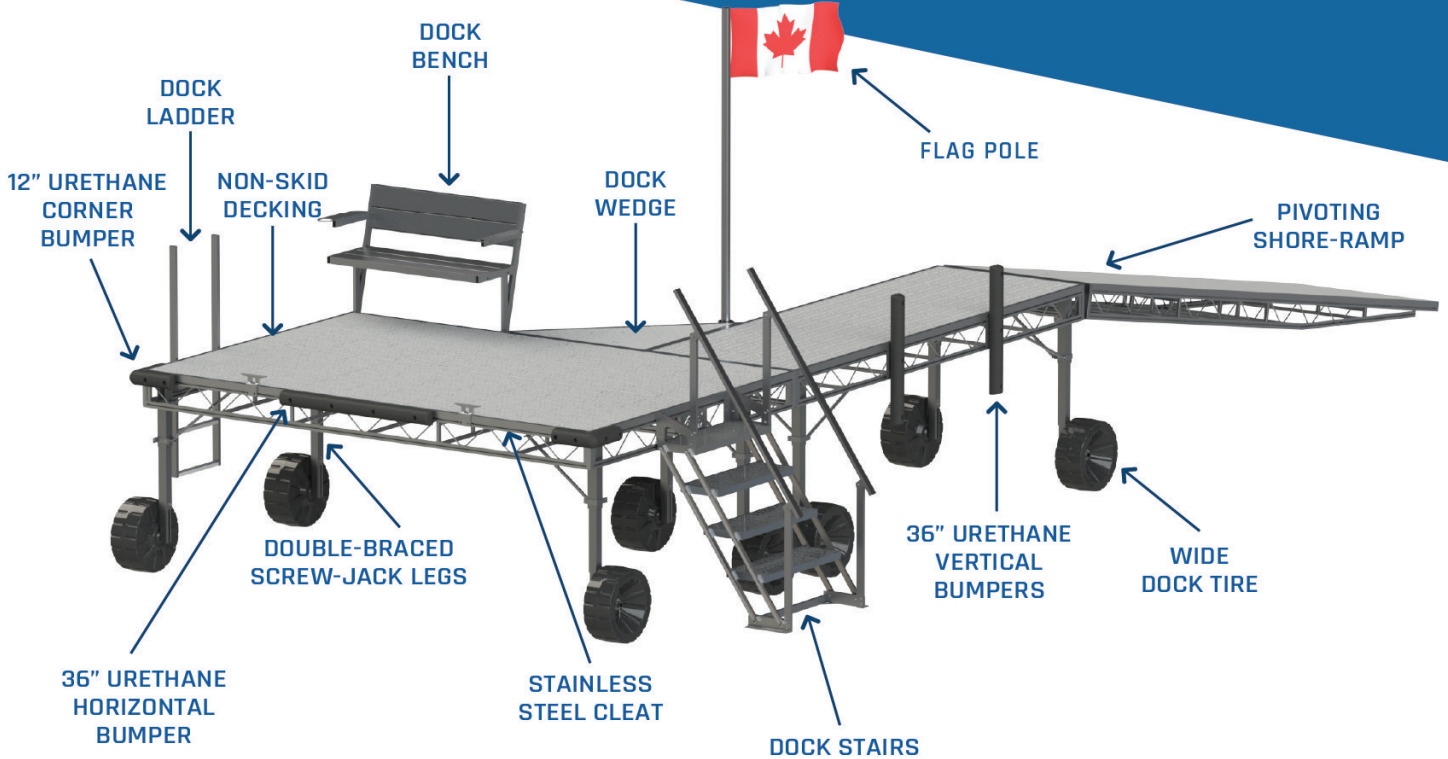
KAYAK RACK



DOCK STAIRS



Additional accessories can be found at [www.paradisedocklift.com](http://www.paradisedocklift.com)



## ROLL-IN DOCK SYSTEM



## DECKING OPTIONS

### GREY, WOODGRAIN & PERFORATED PANELS

CUSTOM SIZES & COLOURS AVAILABLE

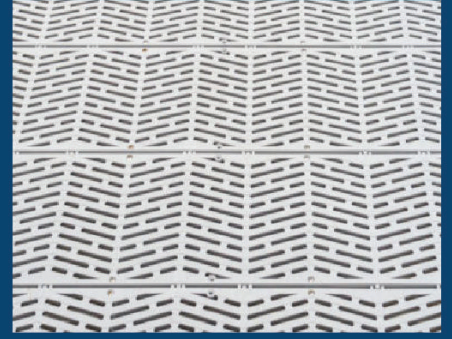
GREY ALUMINUM



WOOD GRAIN



PERFORATED

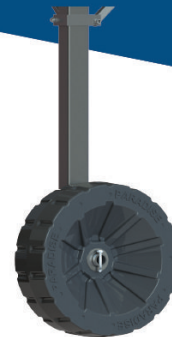


## COMPANY PROFILE

Established in 2009, Paradise Dock & Lift has been serving the marine industry for over a decade. In addition to our roll-in and sectional docks we also offer bottom-based boat lifts, floating boat lifts and custom manufactured floating docks and accessories.

We are passionate about developing innovative marine products that meet the demands of avid boating enthusiasts. Our expert manufacturing and installation experience, combined with our enthusiasm to provide top quality, environmentally-friendly and low maintenance products led us to develop this unparalleled dock system.

For more information, please visit our website or give us a call!



MUD TIRE



SAND PAD

**THE EASIEST,  
MOST DURABLE  
DOCK ON THE MARKET!**

*Paradise*  
Dock & Lift Inc.

1-888-411-3625

[www.paradisedocklift.com](http://www.paradisedocklift.com)





*Paradise*  
Dock & Lift Inc.

**HYDRAULIC  
BOAT LIFTS**

4311A 25 Ave  
Vernon, BC, Canada

1-888-411-3625

[www.paradisedocklift.com](http://www.paradisedocklift.com)



## SHALLOW WATER DESIGN

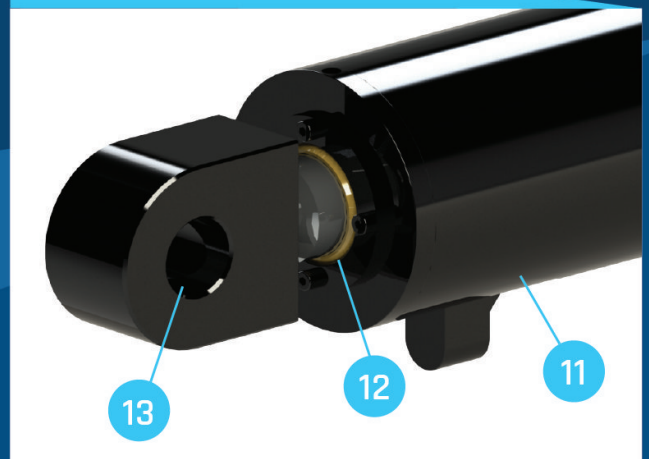
The backbone to a Paradise lift is our rugged structural frame; superior to any of our competitors, its unique features include:

- 1 Shallow water design (draft +8"), the cylinder sits above the side beams allowing these to be jetted into the sand or silt without impeding the cylinder motion, giving you an additional 5" of water bringing the water requirement down to draft +3".
- 2 Overcentre lock is an additional safety feature that locks the lift in the fully raised position, preventing it from drifting down should there be a loss of pressure.
- 3 Adjustable width allows you to configure bunks for any hull design.
- 4 Marine Grade 6061 T6 Aluminum Frame with minimum wall thickness of 0.25".
- 5 The H-Frame utilizes pockets and sleeves for a stronger mechanical connection, minimizing the reliance on welds.
- 6 Large synthetic rubber capped aluminum bunks give more support to your boat; they will not rot or deteriorate.
- 7 Delrin bushings in pivot areas eliminate metal on metal contact and reduce galvanic corrosion from dissimilar metals.
- 8 4' , 5' , or 6' lifting range available.
- 9 Non-skid footpads

## DOCK & BOAT LIFT



## BRONZE SCRAPER

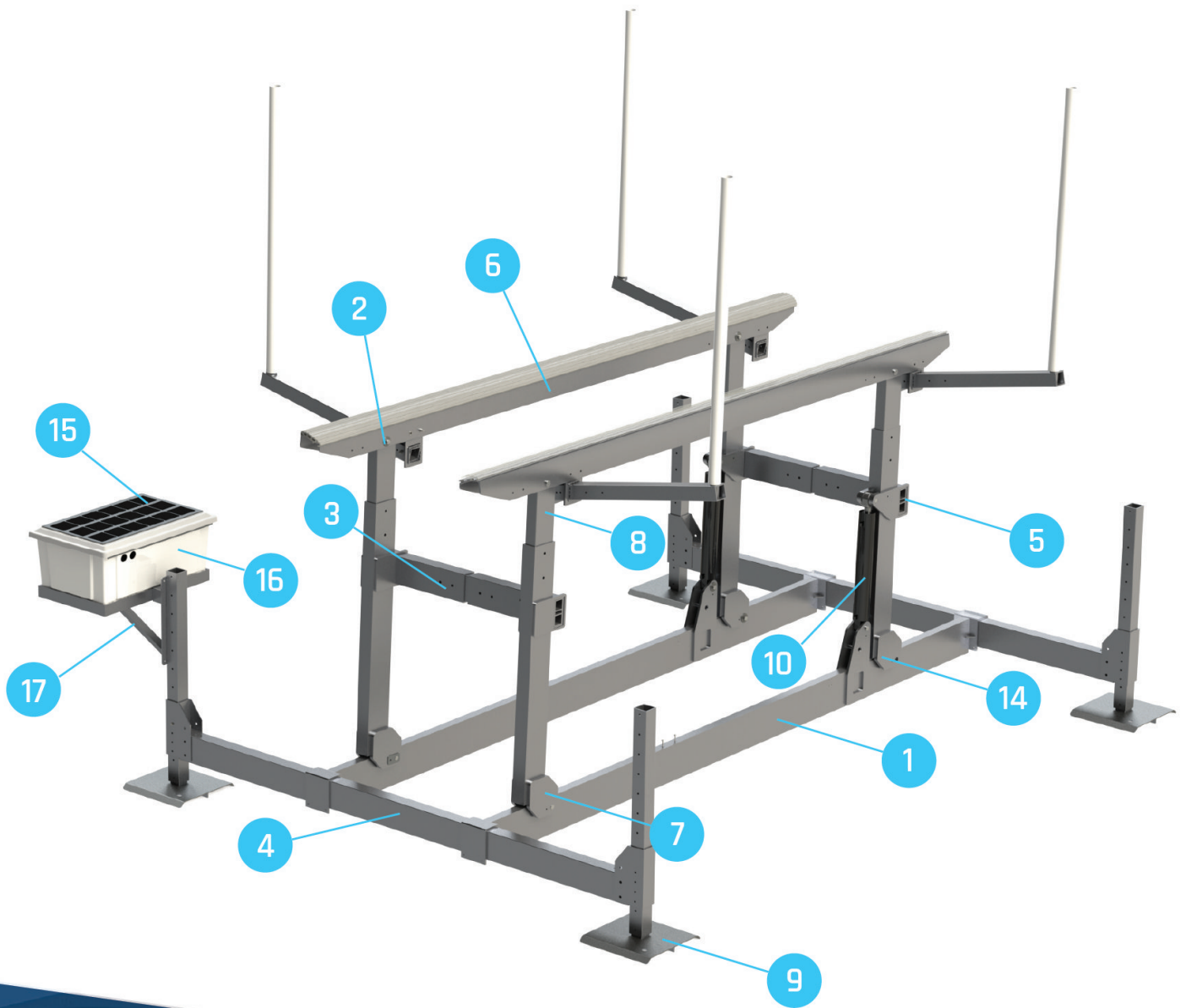


## ADVANCED HYDRAULIC SYSTEM

The Paradise hydraulic lift system has a patent pending design that allows the rod to be fully retracted and protected in the up-position. Our design protects against corrosion, zebra mussels and other harmful marine growth that can damage the seals.

- 10 Stainless steel cylinder and hoses:
  - ▶ Grade 2205 Duplex cylinder that offers twice the strength and corrosion resistance of 316L, with double epoxy coating for added protection.
  - ▶ Grade 17-4 PH rod with chrome coating.
  - ▶ Grade 316 braided 100R8 hoses with Grade 316 fittings.
- 11 Rod retracted when in up position protecting it from pitting, corrosion and damage from marine growth.
- 12 External bronze scraper that can be field replaced without removing the cylinder.
- 13 Oversized rod eyes provide more bearing surface for the pins.
- 14 1" diameter high strength stainless steel cylinder pins.
  - ▶ Higher system operating pressure, more lift capacity.
  - ▶ Advanced environmentally friendly hydraulic fluid that offers excellent shear stability.





## CYLINDER COMPARISON

	MATERIAL	YIELD STRENGTH
PARADISE - ROD	17-4 PH STAINLESS STEEL	125,000 PSI
PARADISE - CYLINDER	2205 DUPLEX STAINLESS STEEL	65,000 PSI
CLOSEST COMPETITOR - ROD	316L STAINLESS STEEL	29,700 PSI
CLOSEST COMPETITOR - CYLINDER	316L STAINLESS STEEL	29,700 PSI



## PROPRIETARY POWERPACK

The Paradise powerpack design is far superior to any other used in the industry with unique features including:

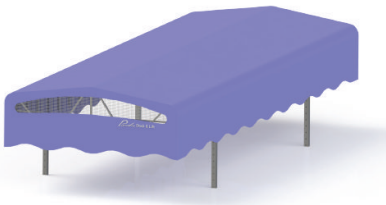
- ▶ 24V system that increases efficiency and performance from lower amp draw, decreases operating temperature enhancing torque and reducing potential damage.
  - ▶ Sealed and submersible electric motors eliminating the risk of water damage.
  - ▶ Waterproof RC Unit with waterproof handhelds that float; handheld remotes also have a backlight for nighttime operation.
  - ▶ IP67 Continuous duty start solenoid.
  - ▶ Optional powersource that provides longer-life, quicker charging and more cycles per charge than conventional systems.
- 15 Industry leading 50 watt solar panel with standard MPPT solar regulator to prevent overcharging and battery damage.
  - 16 Beautiful fiberglass dock box with stainless steel hardware.
  - 17 Optional powerpack brackets for either leg or dock mounting.



BOAT LIFT REMOTE

- ▶ UP TO 40 CYCLES PER CHARGE WITH UPGRADED POWER SOURCE!

## ACCESSORIES



### Canopy

Deep sided canopy that protects your boat from the elements



### Bow Guide

Always park in the same location with our bow-guide



### Wheel Kit

Seasonal installations are a breeze with our wheel kit, just roll-in and roll-out



### Screw Jack Legs

Level your lift effortlessly with a cordless drill



## WHY A PARADISE BOAT LIFT?

Paradise Dock & Lift (Paradise) has over 10 years experience in serving the recreational boating industry. In developing our new range of lifts, we have built upon this experience to improve on our competitor's designs. Our lifts have been engineered with many innovative and industry leading features. These include use of more durable, better quality materials, improved functionality and, attention to detail, with the objective of enhancing your enjoyment of the boating experience.

We manufacture our products in-house, in North America.

Choosing a Paradise lift will be a smart decision that will reward you with great value, a premium product, from a customer focused company, that is committed to maximising your enjoyment of the water.



TRITON BUNK KIT



## MODELS

	PH-2K-4	PH-2K-5	PH-6.5K-4	PH-6K-5	PH-6K-6	PH-8.5K-4
CAPACITY (LBS)	2,000	2,000	6,500	6,000	6,000	8,500
FRAME WIDTH (IN)	79.62	79.62	133.21	133.21	133.21	133.56
FRAME LENGTH (IN)	121.87	121.87	178.15	178.15	178.15	178.15
LIFTING RANGE (FT)	4	5	4	5	6	4
BUNK LENGTH (IN)	88	88	150	150	150	150
FRAME WEIGHT (LBS)	474	494	816	850	905	848

	PH-8K-5	PH-8K-6	PH-10K-5S	PH-10K-6S	PH-11K-4	PH-10K-5
CAPACITY (LBS)	8,000	8,000	10,000	10,000	11,000	10,000
FRAME WIDTH (IN)	133.56	133.56	133.56	133.56	133.56	133.56
FRAME LENGTH (IN)	178.15	178.15	178.15	178.15	202.15	202.15
LIFTING RANGE (FT)	5	6	5	6	4	5
BUNK LENGTH (IN)	150	150	150	150	174	174
FRAME WEIGHT (LBS)	883	1065	883	1119	1125	1159

	PH-10K-6	PH-13K-4	PH-12K-5	PH-12K-6
CAPACITY (LBS)	10,000	13,000	12,000	12,000
FRAME WIDTH (IN)	133.56	133.56	133.56	133.56
FRAME LENGTH (IN)	202.15	202.15	202.15	202.15
LIFTING RANGE (FT)	6	4	5	6
BUNK LENGTH (IN)	174	174	174	174
FRAME WEIGHT (LBS)	1181	1154	1188	1210

## OUR COMMITMENT

At Paradise, our aim is to offer industry leading products, incorporating improvements based on experience gained over 10-years in the business. This knowledge provides our customers an enhanced recreational experience and endless fun on the water.

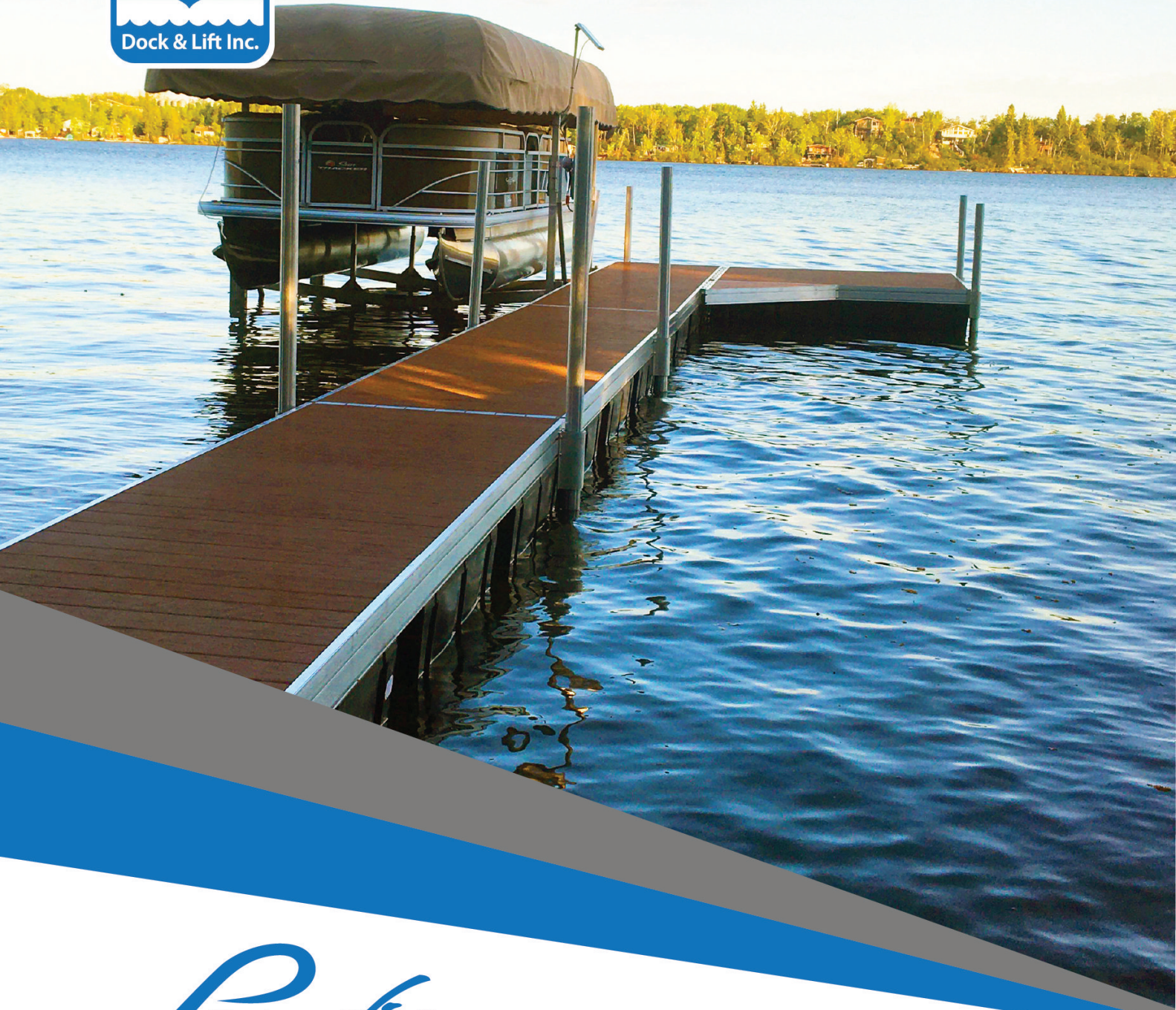
**A PARADISE HYDRAULIC  
BOAT LIFT WILL BE THE LAST  
BOAT LIFT YOU EVER BUY!**

*Paradise*  
Dock & Lift Inc.

1-888-411-3625

[www.paradisedocklift.com](http://www.paradisedocklift.com)





*Paradise*  
Dock & Lift Inc.

**FLOATING  
DOCK**

4311A 25 Ave  
Vernon, BC, Canada

1-888-411-3625

[www.paradisedocklift.com](http://www.paradisedocklift.com)



## PARADISE FLOATING DOCK

The Paradise floating dock system provides an enhanced docking solution for locations where there is large water fluctuations or deep water. The innovative frame design, paired with our proprietary, "Para-Track", accessory track and various float sizes ensures that our docks: provide the flexibility to customize dock configurations to meet your specific needs; can incorporate a wide variety of accessories; and provide a long, safe service life by utilizing durable foam filled floats.

## Why Paradise Floating?

- ▶ 6061 T6 Marine Grade Aluminum Construction
- ▶ Heavy-Duty foam filled floats
- ▶ Modular design
- ▶ Full length piano hinge
- ▶ Multiple decking options
- ▶ Wide choice of bumpers/fenders and accessories

### CUSTOM MARINA



### PERFORATED DECKING



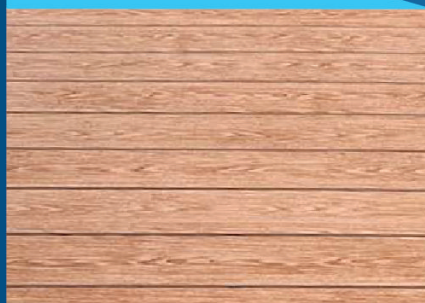
We offer multiple decking choices so you can achieve the look that you desire. Our non-skid decking is recessed into the dock, the boards are screwed down and can easily be replaced if needed. Aluminum trim piece provides a neat and clean finished edge to the dock. We offer powder coated grey decking, our premium powder coated woodgrain, and SureStep perforated decking.

## DECKING OPTIONS

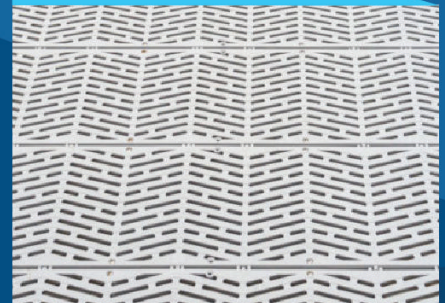
### GREY ALUMINUM



### WOOD GRAIN



### PERFORATED



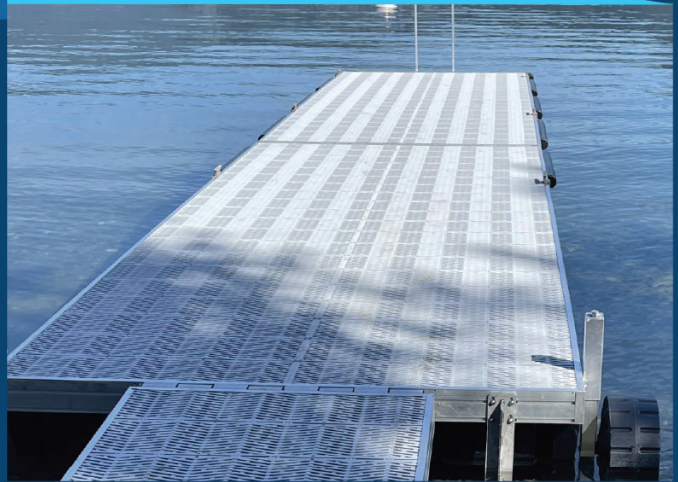


## FRAME & ACCESSORY TRACK

### FRAME DESIGN

Our robust, reinforced frame features a stiffer design necessary to withstand the various forces exerted on the dock. The unique configuration allows for increased strength while minimizing weight. Cross bracing improves structural integrity and decreased bending across the dock, while the outside frame incorporates our innovative Para-Track. The frame is assembled using 6061 T6 Marine Grade aluminum which is welded to provide superior strength. This design results in increased stability and an enhanced experience for the user; it ensures that your investment will perform to the highest standards in service.

### REINFORCED FRAME



### PARA-TRACK



### ACCESSORY TRACK

Our industry leading Para-Track allows for complete customization of your dock package through addition of the various accessories available. The track runs the full perimeter of the dock ensuring that accessories can be adjusted and installed at a location that best suits the your needs. The accessories are secured using the best fasteners available, comprising custom machined stainless steel T-bolts and aluminum T-nuts.

To ensure safety and ease of install, all accessories can be installed from the top of the dock allowing you to stay dry; simply insert the T-bolt or T-nut into the track, rotate and tighten, it's that easy!





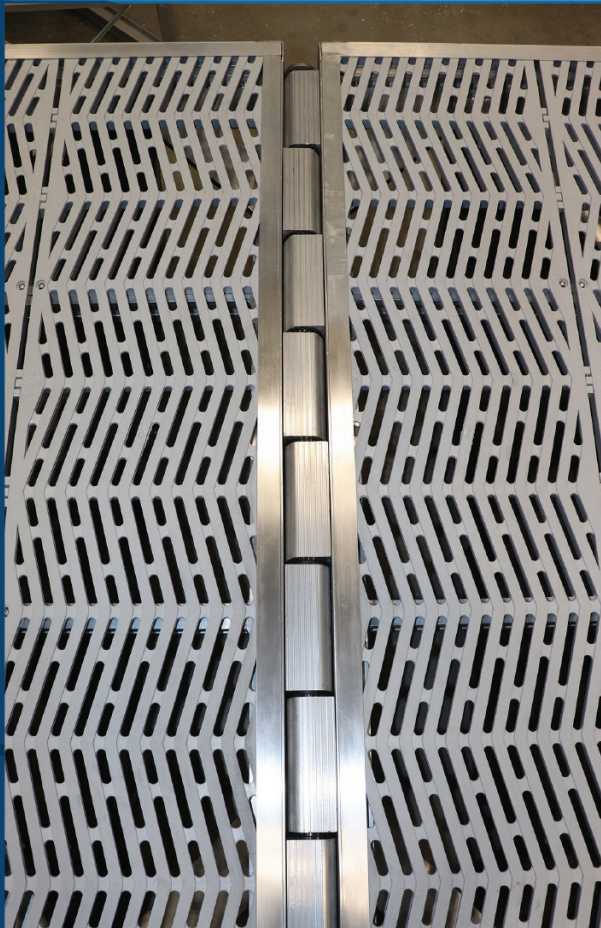
## FLOATS & HINGE SYSTEM

### Premium Dock Floats

- ▶ The float design offers maximum buoyancy and structural integrity.
- ▶ Oversized mounting flanges with custom stainless washers for secure attachment.
- ▶ Heavy duty; minimum wall thickness of 0.15"
- ▶ Shell made with UV inhibitors
- ▶ Resists saltwater, oil, gasoline and marine life
- ▶ Meets Hunt Water Absorption Test
- ▶ Foam filled with 1.0 - 1.5 lb / cu ft density



### PIANO HINGE



### FULL LENGTH PIANO HINGE

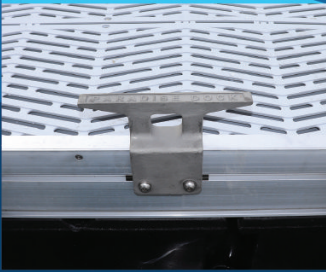
The Paradise hinge comprises a series of extruded sections over the full length of the dock that mechanically hooks into the upper accessory track and bolts into the lower Para-Track, eliminating the use of welds. (Hinges attached by welding are prone to crack upon movement, reducing the strength and the safety of the dock.) Our hinge system accommodates a greater movement range between connected sections of dock and results in a more robust design than provided by our competitors.

The Paradise system is not only significantly stronger but allows the hinges to be moved and rearranged very easily should you need to expand or reconfigure your system. The extruded hinge has custom Delrin inserts to eliminate metal on metal contact, reducing potential for corrosion. A solid 1" stainless pin runs the full length of the hinge to ensure maximum strength. The Paradise piano hinge ensures that our floating docks provide the highest standards of safety and flexibility, enhancing your experience and providing a higher quality product.



# ACCESSORIES & RENDERING

TRACK CLEAT



VERTICAL BUMPER



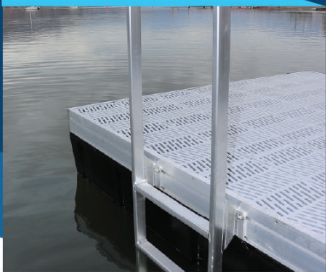
CORNER BUMPER



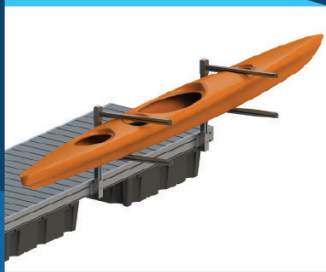
HORIZONTAL BUMPER



FLOATING LADDER



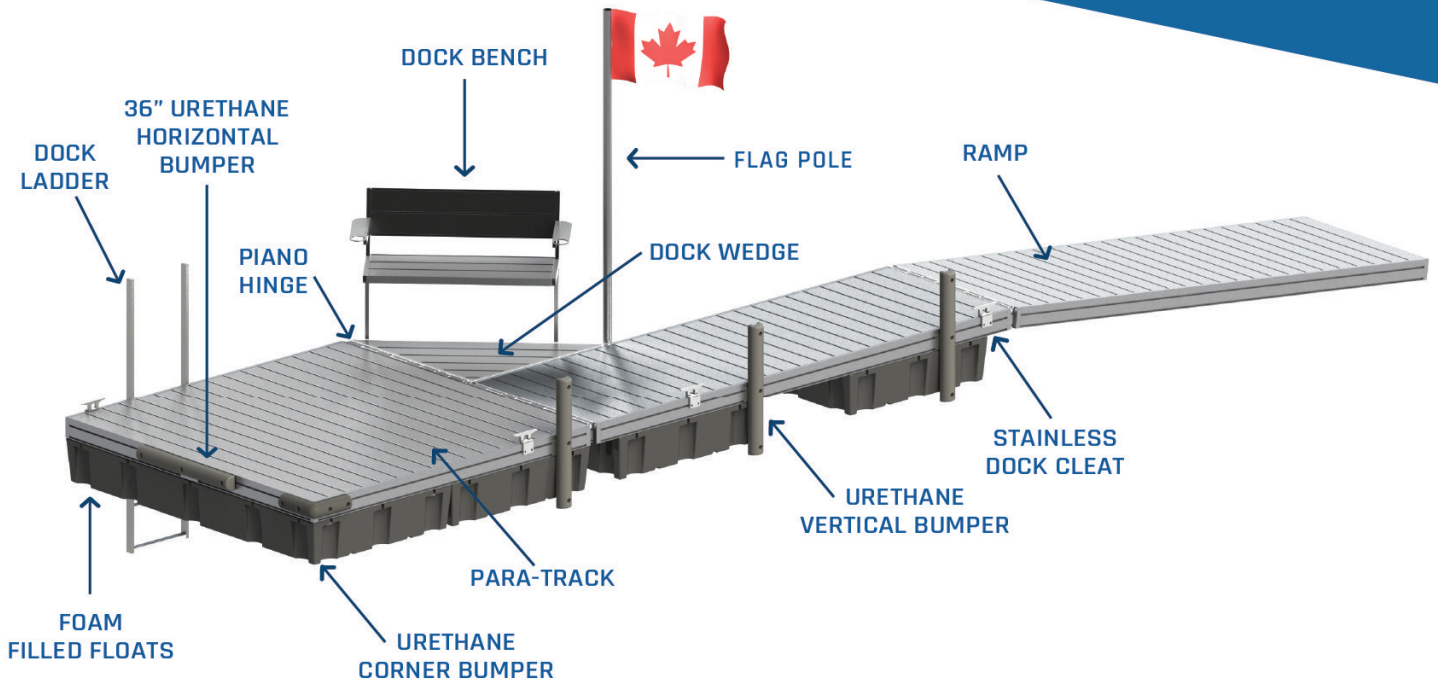
KAYAK RACK



DOCK FURNITURE



FISHING ROD HOLDER



## FLOATING DOCK SYSTEM



## SIZES & ANCHORING OPTIONS

The Paradise floating dock system boasts advanced flexibility provided by the various sizes and anchoring options available. The plethora of configurations ensures that every client's exact needs are achieved, maximizing value from your investment.

### AVAILABLE SIZES

- ▶ Widths: 3 , 4' , 5' , 6' & 8'
- ▶ Lengths: 12', 16', 20', 24'
- ▶ Custom Sizes Available

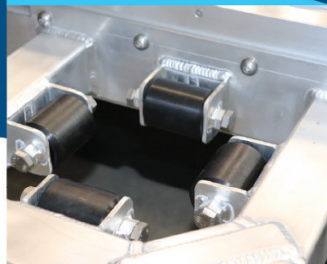
### ANCHORING OPTIONS

AUGER POLES



Simply turn the aluminum auger into the bed

PILING LOOPS



Custom aluminum piling loops that will work with pile driven piles.

CHAIN ANCHOR PLATES



Easily anchor the dock to submersible anchors with our chain plates

CABLE GUIDES



Stainless cable mounts with Delrin bushings.

### OUR COMMITMENT

Established in 2009, Paradise Dock & Lift has been serving the marine industry for over a decade. In addition to our roll-in and sectional docks, we also offer bottom-based boat lifts, floating boat lifts and custom manufactured floating docks and accessories. We are passionate about developing innovative marine products that meet the demands of avid boating enthusiasts. Our expert manufacturing and installation experience, combined with our commitment to provide top quality, environmentally-friendly and low maintenance products led us to develop this unparalleled dock system.

For more information, please visit our website or give us a call!

**THE BEST FLOATING  
MODULAR DOCK SYSTEM IN  
THE INDUSTRY!**

*Paradise*  
Dock & Lift Inc.

1-888-411-3625

[www.paradisedocklift.com](http://www.paradisedocklift.com)